

ZyXEL G-162

802.11g Wireless CardBus Card

Quick Start Guide

Version 2.0

01/2005



Important Note

Federal Communications Commission (FCC) Interference Statement

The 802.11g Wireless LAN Adapter has been tested to the FCC exposure requirements (Specific Absorption Rate).

The equipment complies with FCC RF radiation exposure limits set forth for an uncontrolled environment, under 47 CFR 2.1093 paragraph (d) (2).

This Transmitter must not be co-located or operating in conjunction with any other antenna or transmitter.

Refer to the User's Guide for general FCC statements.

Procedure to View a Product's Certification(s)

1. Go to www.zyxel.com.
2. Select your product from the drop-down list box on the ZyXEL home page to go to that product's page.
3. Select the certification you wish to view from this page.

About Your ZyXEL G-162

The ZyXEL G-162 is an IEEE 802.11g compliant wireless LAN PC card that fits into any CardBus slot. With the ZyXEL G-162, you can enjoy the wireless mobility within the coverage area. The IEEE 802.11g technology provides greater range and offers transmission rate at up to 54 Mbps. Your ZyXEL G-162 can transmit at the proprietary transmission rates of 22Mbps or up to 125 Mbps when connected to the ZyXEL g+ AP or wireless router. Actual speeds attained also depend on the distance from the AP, noise, etc.

1 Installation Requirements

Before installation, make sure you have a computer with the following:

- Pentium II 300MHz or above
- A minimum of 6 MB available hard disk space
- A minimum of 32 MB RAM
- A CD-ROM drive
- A CardBus slot
- Windows 98 Second Edition, Windows Me, Windows 2000 or Windows XP
- Windows 98 SE users may need the Windows 98 SE CD



If you install the Funk Odyssey Client software on the computer, uninstall (remove) it.

2 Driver Installation for Windows XP

If you want to use the Windows XP Wireless Zero Configuration (WZC) service to manage the ZyXEL G-162, follow the steps below to install the driver only.

1. Locate an available CardBus slot on the computer.
2. With the pin connectors facing the slot and the LED side facing up, slide the ZyXEL G-162 into the slot. The LEDs turn on if the ZyXEL G-162 is properly inserted.

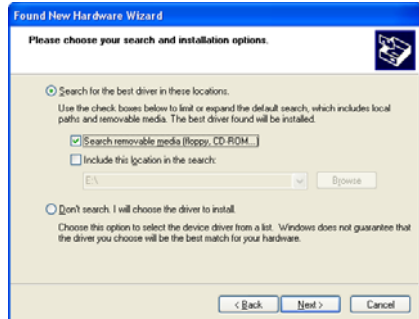


Never bend, force or twist the ZyXEL G-162 into the slot.

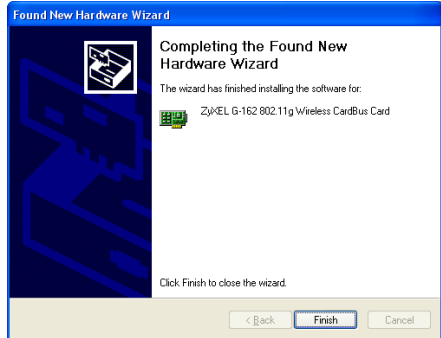
3. The **Found New Hardware Wizard** window appears. Select **Install from a list of specific location (Advanced)** and click **Next**.



4. Insert the included CD into your CD-ROM drive, select **Search removable media (floppy, CD-ROM...)** and then click **Next**.



5. After the driver has been installed successfully, click **Finish** to complete the installation.



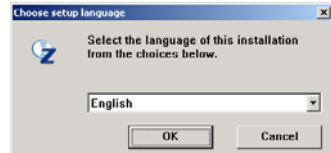
3 ZyXEL Utility and Hardware Installation

The installation procedures are similar for all supported Windows versions. Windows 2000 screen shots are shown unless otherwise specified.



DO NOT insert the ZyXEL G-162 at this point.

1. Insert the support CD into the CD-ROM drive on your computer. The CD automatically runs. Otherwise, locate and double-click **setup.exe**.
2. Select your language and click **OK**.

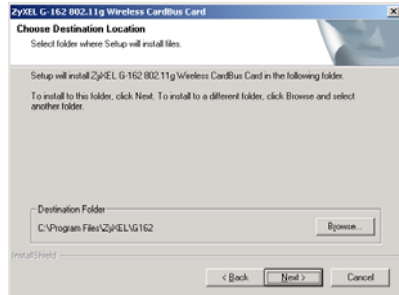


ZyXEL G-162 Quick Start Guide

3. Click **Install Utility** to start installation.



4. A welcome screen displays. Click **Next**.
5. Click **Next** to accept the default file location or click **Browse** to select an alternate folder.



6. Click **Finish** to restart the computer.

7. Locate an available CardBus slot on the computer.
8. With the pin connectors facing the slot and the LED side facing up, slide the ZyXEL G-162 into the slot. The LEDs turn on if the ZyXEL G-162 is properly inserted.



Never bend, force or twist the ZyXEL G-162 into the slot.

After you install the ZyXEL Utility and insert the ZyXEL G-162, an icon appears in the system tray.



If the ZyXEL Utility icon displays, the ZyXEL G-162 is installed properly. Refer to the *User's Guide* to configure the ZyXEL G-162.

4 LED Display



The following table describes the LEDs on the ZyXEL G-162.

LED	COLOR	STATUS	DESCRIPTION
PWR	Green	On	The ZyXEL G-162 is receiving power.
		Off	The ZyXEL G-162 is not receiving power.
LINK	Green	Blinking	The ZyXEL G-162 is receiving or sending data.
		Off	The ZyXEL G-162 is not receiving or sending data.

5 One-Touch Intelligent Security Technology (OTIST)

OTIST allows a ZyXEL g+ access point (AP) or wireless router to assign its SSID and security settings (WEP or WPA-PSK) to the ZyXEL wireless adapters that support OTIST and are within transmission range. The ZyXEL wireless adapters must also support OTIST and have OTIST enabled.



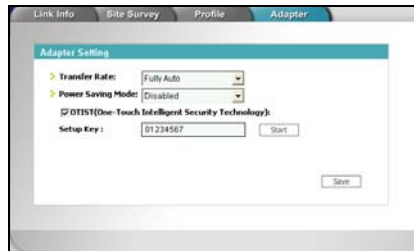
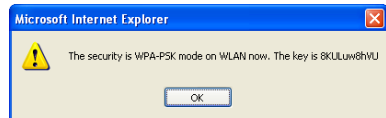
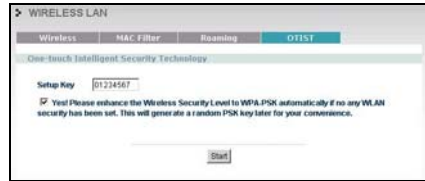
This will replace the pre-configured wireless settings on the wireless adapters.



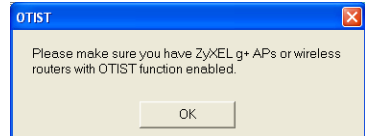
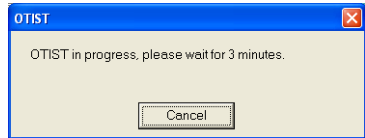
This feature is not applicable when you use WZC.

5.1 How to configure your devices for OTIST

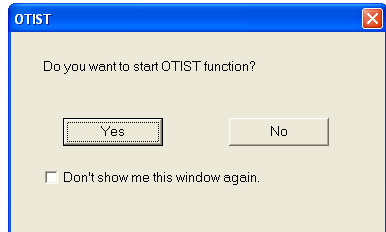
1. In the **OTIST** web configurator screen of your ZyXEL g+ AP or wireless router, enter an OTIST setup key of exactly eight ASCII characters. The default key is 01234567.
2. Click **Start** to encrypt the wireless security data using the setup key.
3. A dialog box displays the ZyXEL g+ AP or wireless router security settings. Click **OK** to proceed with the OTIST setup.
4. Open the **Adapter** screen of the ZyXEL G-162 utility, enter the same setup key as the ZyXEL g+ AP or wireless router to which you want to associate.
5. Select the **OTIST(One-Touch Intelligent Security Technology)** checkbox and click **Start**.



- An OTIST in progress screen appears. The process takes three minutes. During this time the ZyXEL G-162 searches for an OTIST-enabled AP or wireless router to associate.
- If the ZyXEL G-162 cannot find a ZyXEL OTIST-enabled AP or wireless router after three minutes, a warning screen displays. Make sure that OTIST has been enabled on the AP or wireless router. Click **OK** to go back to the ZyXEL utility main screen.
- When the following screen in the ZyXEL g+ AP or wireless router web configurator closes, your current AP or wireless router wireless settings are automatically saved to the wireless adapters.



9. If you activate OTIST on the ZyXEL G-162, each time you start the ZyXEL utility, the following screen appears. Click **Yes** to have an OTIST-enabled AP or wireless router within transmission range to assign the wireless settings. You must also activate and start OTIST on the ZyXEL g+ AP or wireless router at the same time. Otherwise, click **No**.



6 Troubleshooting

PROBLEM	CORRECTIVE ACTION
<p>Windows does not auto-detect the ZyXEL G-162.</p>	<p>Make sure the ZyXEL G-162 is inserted into the computer CardBus slot properly and then restart your computer. Check the LEDs on the ZyXEL G-162.</p>
	<p>Perform a hardware scan by clicking Start, Settings, Control Panel and double-clicking Add/Remove Hardware. (Steps may vary depending on the version of Windows). Follow the on-screen instructions to search for the ZyXEL G-162 and install the driver.</p>
	<p>Check for possible hardware conflicts. In Windows, click Start, Settings, Control Panel, System, Hardware and then click Device Manager. Verify the status of the ZyXEL G-162 under Network Adapter. (Steps may vary depending on the version of Windows).</p>
	<p>Install the ZyXEL G-162 in another computer. If the error persists, you may have a hardware problem. In this case, you should contact your local vendor.</p>