

NetAtlas Enterprise

Ethernet Switch Manager

Quick Start Guide

Version 1.01

9/2005

The logo for ZyXEL, featuring the word "ZyXEL" in a bold, blue, sans-serif font. The "Zy" is in a smaller font size than "XEL".

1 Introduction

The NetAtlas Enterprise Ethernet Switch Manager is an Element Management System (EMS) that retrieves management information from switches using the SNMP protocol. The EMS allows you to manage multiple switches from a central location.

This quick start guide shows you how to install the EMS. Refer to the user's guide for background and configuration information.

2 System Requirements

These are the system requirements for the Windows version of the EMS.

- CPU: Intel Pentium 4, 1.6 GHz or above
- Memory (RAM): 1 GB or more
- Hard Disk free space: 20 GB or more
- Screen Resolution: 1024x768 pixels
- Ethernet Adaptor: 10/100 Mbps
- Operating System: Windows 2000 (with service pack 1), Windows XP or Windows Server 2003 and all using NTFS file system.
- Database Program: PostgreSQL 8.0 later versions.
- Castle Rock's SNMPc 6.09 (Enterprise or Workgroup edition)

2.1 Device and Firmware Versions Supported¹

The EMS supports the devices and device firmware versions as listed.

- ES-3124: 360TP1C0 or later versions
- ES-3124PWR: 360TY1C0 or later versions
- ES-2024A: 360TX1C0 or later versions
- GS-2024: 360LT0C0 or later versions

1. The list of devices and device firmware versions supported is accurate at the time of writing.

2.2 EMS Installation Overview

The following gives an overview of what you need to do to install the EMS:

- 1 Install SNMPc. See the documentation that comes with your SNMPc for information.
- 2 Install the EMS. The PostgreSQL database will be installed during the EMS installation.

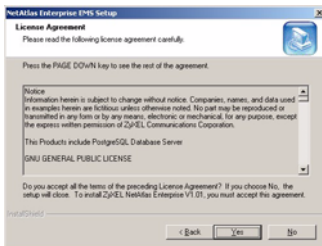
Note: The installation program will skip the PostgreSQL installation if you have already installed.

- 3 Add custom MIB files in SNMPc.
- 4 Locate device(s) that you want the EMS to manage.
- 5 If required, configure the ODBC driver to connect to the database.

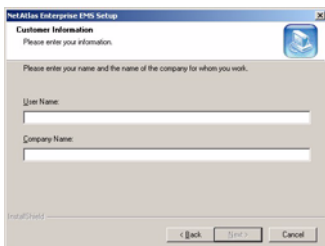
3 Installing the EMS

Follow the steps below to install the EMS server on a computer.

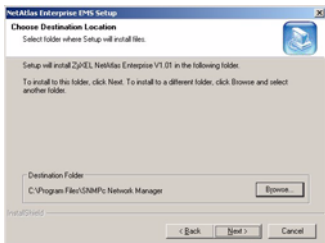
- 1 Install SNMPc if it is not already installed. See the user's guide for more information.
- 2 Find and double-click **NetAtlasEnterprise_S101.exe** on your EMS CD.
- 3 A **Welcome** screen displays. Click **Next** to continue.
- 4 Read the license agreement. Click **Yes** to accept the agreement.



5 Type your name and company name in the following screen. Click **Next** to continue.

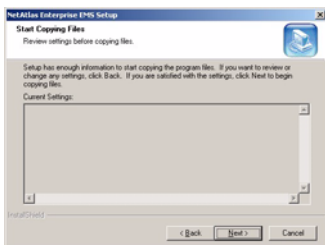


6 You must select the same directory where you installed SNMPc. Click **Browse** if it's different from the destination folder shown. Click **Next** to continue.



7 In the next screen, click **Next** to begin the installation and start copying files.

8 The installation program will proceed to install PostgreSQL if you have not already installed it. This may take a few minutes.



9 When the installation process is complete, a screen displays as shown. Click **Finish**.



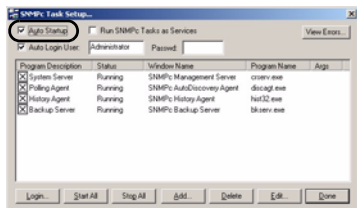
4 SNMPc Network Manager Startup

Start the SNMPc Network Manager manually (from the Windows **Start** menu) or have it start automatically each time you turn on your computer.

To start SNMPc automatically each time you turn on your computer, click

Config, System Startup, select **Auto Startup** and then click **OK**.

Conversely, clear this check box if you do not wish SNMPc to automatically start each time you turn on your computer.



5 Adding MIBs

The Management Information Base (MIB) is designed for holding management information on systems (such as the switch that the standard MIB does not include).

1 From the SNMPc Network Manager main screen, click **Config, MIB Database**.

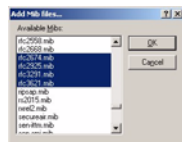
2 In the **Compile Mibs** screen that displays, scroll down to the bottom of the **Mibs to Compile** list box and click **Add**.

Note: If you have uninstalled an earlier version of NetAtlas EMS, you must remove **zyxel.mib** first.



3 Select the following MIBs in the **Add Mibs** list box:

- rfc2674.mib
- rfc2925.mib
- rfc3291.mib
- rfc3621.mib
- zyxel-es3124.mib
- zyxel-es3124pwr.mib.
- zyxel-es2024a.mib



- zyxel-gs2024.mib

4 Click **OK**.

5 Click **Compile** in the **Compile Mibs** screen.

6 Click **Yes** when asked to confirm, then click **OK**.

7 Finally click **Done** in the **Compile Mibs** screen.



6 Finding your Switch

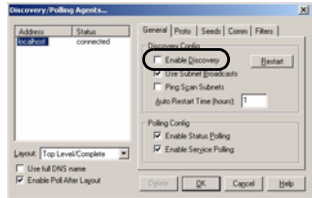
The SNMPc Network Manager can find new devices automatically using auto-discovery (enabled by default) or you will have to add device(s) manually.

6.1 Device Auto-Discovery

1 To enable auto-discovery and then find your device, click **Config, Discovery/Polling**.

2 Select the **Enable Discovery** check box and click **OK**.

3 Find your device in the **Device List** panel. Double-click the device icon to access the EMS.

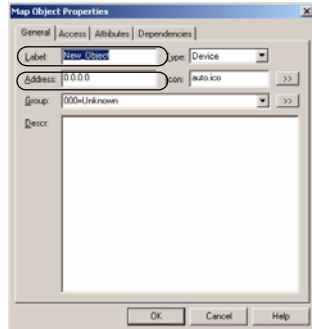


6.2 Add Device(s) Manually

If you have disabled auto-discovery, follow the steps below to add your device(s) manually.

1 Click **Insert, MAP Object, Device**.

2 In the **MAP Object Properties** screen, enter a descriptive device name and IP address for the device and then click **OK**.

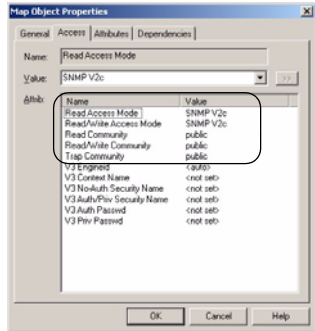


7 Using SNMP

Check that you are using SNMP Version 2c (SNMPv2c). If you are not using SNMPv2c, you must uninstall any previous versions and install SNMPv2c. Refer to *RFC 1901* for more information on SNMPv2c. Follow this procedure to use SNMPv2c.

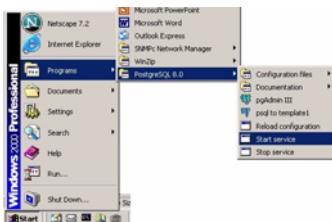
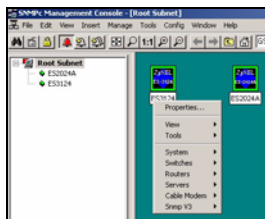
- 1 Right-click the **Device** icon and select **Properties**.
- 2 Click the **Access** tab.
- 3 Set the specified fields in the **Map Object Properties** screen exactly as shown in the figure.

Note: For security purposes, it is strongly recommend to change the **Read Community** and **Read/Write Community** defaults.



Write down this information in a secure place so you will not forget it later!

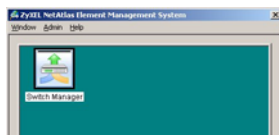
- 4 Click **OK**. After the device has been found, the icon and label appear in the network manager view window.
- 5 Right-click on the device icon to view a set of SNMPc network manager shortcuts. Click **Properties** to verify the information you entered in the previous step.
- 6 Make sure the PostgreSQL database is running. PostgreSQL should start automatically when you start Windows. If it does not, click **Start** (or **start**), **Programs**, **PostgreSQL 8.0** and then click **Start service**.



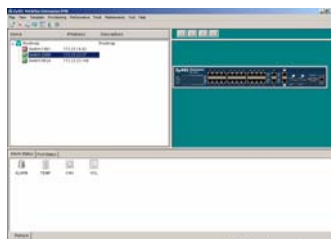
8 Accessing NetAtlas

Follow the steps below to access NetAtlas.

- 1 In the SNMPc main screen, double-click the switch icon to view the **Switch Manager**.



- 2 A screen displays as shown. Double-click the **Switch Manager** icon to access the main EMS configuration screen.



9 Troubleshooting

- 1 SNMPc, EMS and/or PostgreSQL will not install properly
 - Make sure that the computer on which you want to install the SNMPc, EMS and PostgreSQL meets the minimum hardware and software requirements.
 - To install PostgreSQL, make sure your computer is using NTFS file system.
 - Shut down any services or applications that are running which may affect the installation.
 - Remove any previous versions of PostgreSQL and SNMP software from your computer.
 - Re-install SNMPc and EMS in that order.
- 2 I cannot find my device in the SNMPc Management screen.
 - Check that you have added and compiled the MIBs correctly (see [Section 5 on page 5](#)). Make sure these instructions are followed exactly.
 - Check that you have enabled auto-discovery; see [Section 4 on page 5](#).
 - Check that the map object properties are correct for initial installation; see [Section 6.2 on page 6](#). Make sure the IP address entered is the IP address of the switch you want to manage via the EMS.

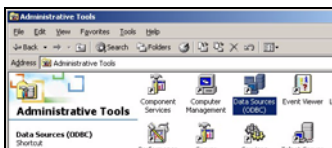
- Check that the ODBC driver is correctly configured; see [Section 9.1 on page 9](#).
- Make sure that PostgreSQL is running.
- Make sure that the computer you have installed the EMS on, is connected to the network where the switch is located.
- Make sure your computer's Ethernet card is working properly.
- If the problem still persists, uninstall and re-install the EMS software.

9.1 Configuring the ODBC Driver

The ODBC driver should already be installed from the EMS installation. You must configure the ODBC driver for the EMS to connect to the PostgreSQL database successfully.

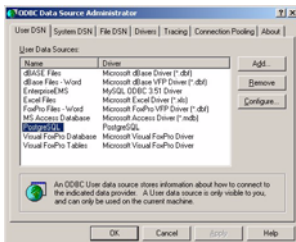
Follow the steps below to configure the ODBC driver in Windows 2000. Steps are similar for other supported Windows operating systems.

1 Click **Start, Settings and Control Panel** to open the **Control Panel** screen. Double-click **Administrative Tools**.



2 Double-click **Data Source (ODBC)**.

3 A screen displays as shown. In the **User DNS** screen, select **PostgreSQL** and click **Configure**.



4 The **PostgreSQL ODBC Driver Setup** screen displays. Configure this screen exactly as shown in the figure. The default password is "1234".



5 Click **Save** to save the changes and close this screen.